

4

3

2

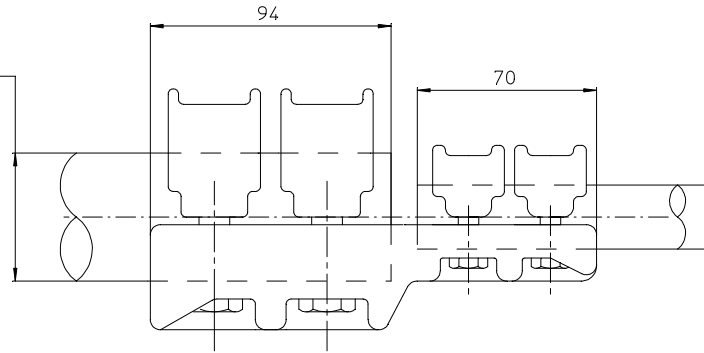
1

© COPYRIGHT 2007 BY TYCO ELECTRONICS CORPORATION ALL RIGHTS RESERVED. TOUS DROITS RESERVES

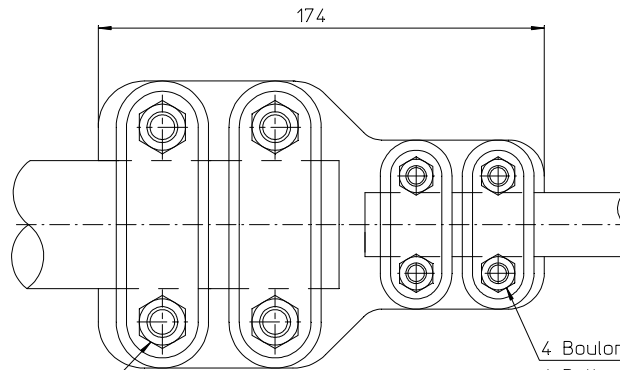
LOC DIST
FH 00

REVISIONS				
P	LTR REV	DESCRIPTION MODIFICATIONS	DATE	DWN DESS APVD APPR
A		FF327-94	4-May-94	PV HV
B		EQ00-0195-09	11-Jun-09	EN LR

Tube ou borne $\varnothing 46$ à 50.99
 Tube ou borne 46DIA to 50.99
 Tubo ou borne $\varnothing 46$ a 50.99



Cable ou tube $\varnothing 21$ à 25.99
 Cable or tube 21DIA to 25.99
 Cable o tubo $\varnothing 21$ a 25.99



60 Nm { 4 Boulons $\varnothing 12$ acier inox A2
 4 Bolts 12DIA stainless steel A2
 4 Tornillos $\varnothing 12$ acero inoxidable A2

4 Boulons $\varnothing 8$ acier inox A2
 4 Bolts 8DIA stainless steel A2
 4 Tornillos $\varnothing 8$ acero inoxidable A2 } 20 Nm

<small>THIS DRAWING IS CONTROLLED BY TYCO ELECTRONICS CORPORATION. IT IS SUBJECTED TO THE REVISIONS AND THE ENGINEERING ORGANIZATION OF TYCO ELECTRONICS. SIMEL SHOULD BE CONTACTED FOR THE LATEST REVISION. CE PLAN EST UN DOCUMENT CONTRÔLÉ PAR TYCO ELECTRONICS CORPORATION. IL EST SUSCEPTIBLE D'ÊTRE REVISÉ. POUR OBTENIR LA DERNIÈRE RÉVISION, CONTACTER LES SERVICES TECHNIQUES DE TYCO ELECTRONICS SIMEL SAS - 21220 GEVELLY CHAMBEREN FRANCE.</small>		DWN /DESSINE 4-May-94 VOGEL CHK /VERIFIE 11-Jun-09 VERGUET				SIMEL PRODUCTS	
DIMENSIONS: mm		TOLERANCES UNLESS OTHERWISE SPECIFIED PER TOLERANCES NON SPECIFIEES SELON : -		APVD /APPROUVE - ROYER PRODUCT SPEC - SPEC. PRODUIT - 02BFC0031 APPLICATION SPEC - SPEC. APPLICATION -		NAME TITRE RD 82 50 25	
		MATERIAL MATIERE -		FINISH FINITION -		SIZE FORMAT A3 CAGE CODE 00779 DRAWING NO / PLAN No 716341 RESTRICTED TO RESERVE A -	
ITEM:		APPROX. WEIGHT / MASSE, APPROX. 1.6 KG		UNQUEMENT FOUR REFERENCE SCALE ECHELLE 1/2		SHEET FEUILLE 1 OF DE 1 REV B	
CUSTOMER DWG / PLAN CLIENT				UNQUEMENT FOUR REFERENCE SCALE ECHELLE 1/2			